

ITW saw a challenge: how to create a portable tool that delivered the power of pneumatic tools without the hoses and compressors. In 1991, ITW Paslode conquered the challenge with the revolution of gas-powered technology. The cordless Impulse Finish Nailer delivered the power of pneumatic tools without cluttering job sites.

With the thought of Driving Jobsite Speed while creating a safer work environment, ITW Ramset built upon the Paslode technology and in 1992 introduced the TrakFast to the drywall trade. It forever changed the way the world worked. In 2003, ITW Ramset followed up on the success of the TrakFast with the T3SS which is setting the standard for electrical and mechanical contractors.



**Drywall**



**Electrical**



**Mechanical**

- No Licensing Required
- Fast and Easy to Use
- Quiet—No Recoil
- No Cords or Hoses
- Long Fuel Cell & Battery Life

Gas significantly lowers cost-in-place, reduces stress on the employee, and it's much quieter to use than drilling or powder actuated tools (PATs), so you can work in occupied buildings. There are times when you need the

power and accuracy of our PATs—like the speed of our D45A disc tool, or the work horse, nearly maintenance-free 721 single shot PAT. But constant use of these tools can be noisy and overly jarring on the body.

**When the conditions are right, gas is the right choice.**

**Problem:**  
"My guys work on block all day long—from electrical boxes to furring. I've tried powder tools and they blow holes in block. What makes the Ramset technology different?"

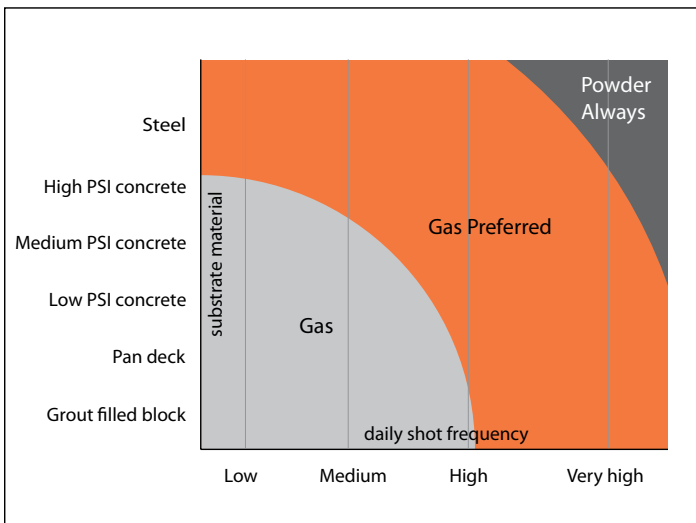
**Solution:**  
Ramset technology has patented overdrive technology built in to every gas-powered tool. The tool works under the same principal as a combustion engine. A little gas, a little spark and a powerful shot, without the recoil associated with powder.

**The industry transitions to gas technology**

**Problem:**  
"I don't want to have to re-license my guys to work with gas technology"

**Solution:**  
Since there are no loads, there's no licensing needed. In fact, Union Trainers have begun including the Ramset Gas Tools in training classes, and students can't believe how easy the tools are to work with.

In addition, the gas powered tools are totally portable and can be used for almost all your jobs—without the worry of having unspent loads on your jobsite.



### The Inside Story

The patented Ramset technology delivers precisely balanced power eliminating the damage caused by overdrive in PATs.

How it works: As the nosepiece is depressed, a rechargeable battery turns on the fan motor. In less than a second: a precise amount of fuel is injected into the combustion chamber. When the trigger is pulled, a spark creates an explosion that drives the piston into the fastener, and the fastener in the work surface. The action creates a vacuum that pulls the piston back to the start position.

In fact the technology is so precise it won't blow through a pop can.

# T3MAG



## MOST COMMON FASTENERS

PART NO.	DESCRIPTION
T3012	1/2" steel pin with T3 fuel cell
T3034B	3/4" concrete pin with T3 fuel cell
T3034S	3/4" step shank pin with T3 fuel cell
T3100	1" concrete pin with T3 fuel cell

## DESCRIPTION

- Gas Technology
- 45-Pin Magazine
- One Step Fuel Injection
- 2 Year Warranty
- Length: 18-1/2"
- Height: 15"
- Weight: 9.2 lbs.
- Pin Guide O.D.: .590
- Maximum Pin Length: 1"

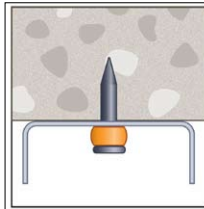
## ADVANTAGES

- Higher stick rate
- 25% more power
- Easy push down force
- Deep leg track capacity
- 45-pin magazine capability
- Fitted dust shield
- Battery charger provides constant charging even with low voltage drops
- 2 Year Warranty (6 months on wearable parts)
- No License Required

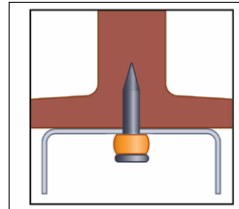
## FEATURES

### T3MAG Increase Your Range with Overhead Power

The Power of the T3MAG allows you to consistently shoot where no other gas tool has gone before. The .125 diameter pin is specifically engineered to work in the toughest concrete and steel where other pins cannot perform. The new T3MAG system delivers power that rivals other gas and powder systems.



Settling aggregate is the biggest reason for overhead pin failure.



With the T3's 1/2 steel pin you can even shoot into the web of steel.



Easy battery loading. Battery rest position allows you to turn off the tool without fully removing the battery.

## FUEL CELL AND BATTERY



### T3 fuel cell Part No. T3FUEL

Replaces conventional powder loads and drives more than 1000 pins



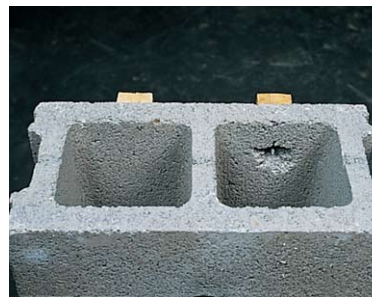
### Part No. B0092

The 6-volt Ni-Cd battery can drive more than 3000 shots per charge

## APPLICATIONS



Even though the T3 has enough power to fasten into hard concrete and steel it still will not blow through hollow block.



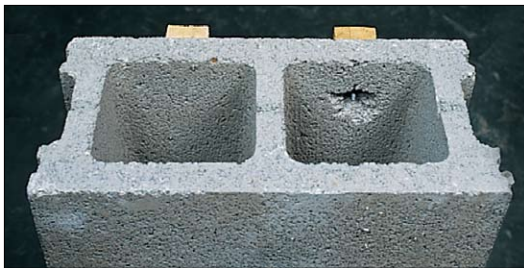
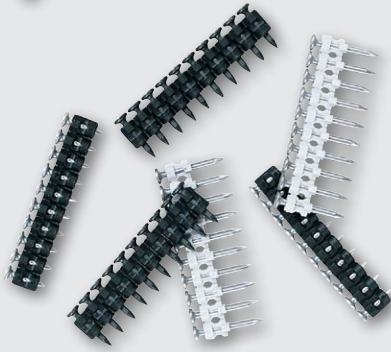
Will not spall hollow block like powder actuated.



Perfect for hat channel applications.

# TRAKFAST

## TF1100



TrakFast ICC ESR-2579 is the only approval that allows you to fasten into any location on a hollow block wall and won't blow away block like a powder tool.

### DESCRIPTION

- Gas Technology
- Fully Automatic
- 1-1/2" Pin Capacity
- 42 Pin Magazine Capacity
- Length: 17"
- Height: 15-1/2"
- Weight: 8.375 lbs.
- Maximum Capacity: 42 pins
- Maximum cycles/second: 2
- Fuel cell: 1000 shots
- Battery (charged): 3000 shots

### ADVANTAGES

- **SPEED:** Three to five times faster than powder tools. 42-pin magazine reduces load time.
- **EASY TO USE:** Tool automatically resets piston. No recoil, tool absorbs shock resulting in less operator fatigue.
- **NO LICENSING REQUIRED:** Unlike powder-actuated tools, no licensing is required.
- **NO CHANGING LOADS:** TrakFast uses a fuel cell, not a load. No need to inventory different colored loads
- **NARROW HOSE & PROFILE:** Allows tool to reach inside deep leg track (1-5/8" wide x 2" high).
- 2 Year Warranty (6 months on wearable parts).

### FEATURES

**Still the most revolutionary fastening system in the construction industry!**

Since its introduction in 1991, TrakFast has been the tool of choice for both interior and exterior contractors. The TrakFast Automatic Fastening System fastens all types of track, from standard track to hat channel, deep leg, Z, and J channel. Contractors continue to report tremendous savings when using TrakFast for high production fastening. They have learned that TrakFast's actual cost in place beats all other systems. The increased speed and productivity of TrakFast allows the contractor to bid more competitively, complete the job sooner and move on to the next job. Anyone can use TrakFast—just load the pins and fire. It's that easy!

**TrakFast's power comes from the battery and fuel cell**

The 6-volt rechargeable Ni-CD battery can drive approximately 3000 shots per charge. The clean burning fuel cell can drive over 1000 pins and keeps the tool cleaner than powder actuated tools.



**Fastening System Productivity**

In the time it takes you to drive two pins with a powder tool, you can drive up to 10 pins with TrakFast!



### MOST COMMON FASTENERS

PIN #	PIN LENGTH		MOST COMMON APPLICATION
	IN.	(MM)	
FPP012S	1/2	12.7	Track to steel
FPP034B	3/4	19.1	Track to concrete



### APPLICATIONS



Track to steel



Lath attachment—using one-inch TrakFast discs and magnetic probe adapter



Furring attachment—perfect fastening every time in soft and hard base materials



Plywood attachment—using TrakFast plywood to steel pin



Track to concrete

# T3SS



**VERSATILE, fastens to solid concrete, hollow block, pan deck and steel.**



## APPLICATIONS



12HSMP034 clip assembly used to secure conduit



M034 fastener used to hang HVAC Duct Strap



M100 fastener used to attach a junction box

## DESCRIPTION

- Gas Technology
- Single Pin Gas Tool
- Fuel Injection
- Cross Over Technology
- 2 Year Warranty (6 months on wearable parts)
- Length: 13-1/2"
- Height: 15"
- Weight: 7.0 lbs.
- Pin Guide O.D.: 1/2" Standard, 7/8" Magnetic
- Maximum Pin Length: 1-1/2"

## ADVANTAGES

- Sets the standard for single-shot applications
- 5 times faster than traditional drill and anchor methods
- Replaces the need for tools like the DX35
- Reduced operator fatigue
- Reduced installation costs—up to 75%
- Quiet enough to work in tenant occupied buildings
- Removable rear foot
- Interchange nose

## FEATURES

### Crossing over from powder to gas

Ramset is serious when it comes to driving job speed by creating the T3SS—the single shot tool that will help move contractors from powder to gas.

The T3SS provides the benefits of shooting a gas tool, including reduced installation time and operator fatigue for the contractor who normally shoots a muzzle loaded powder tool.

To make the T3SS the most versatile gas tool in the industry, Users can change out nosepieces to accommodate any fastening need. From metal-to-concrete, hard concrete or steel, pan deck, block and just about surface you can think of the T3SS works for you.



No more fines for unspent loads on the jobsite.



Easy battery loading. Battery rest position allows you to turn off the tool without fully removing the battery.

### FUEL CELL AND BATTERY



**T3 fuel cell**  
**Part No. T3FUEL**

Replaces conventional powder loads and drives more than 1000 pins

**Fuel injection means no additional steps of preparing a fuel cell. Click the fuel cell in place and the tool is ready to go.**



**Part No. B0092**

The 6-volt Ni-Cd battery can drive more than 3000 shots per charge

### FASTENER AND MAGNETIC NOSEPIECE



The optional interchangeable nosepiece (Part Number M150200) is able to shoot a variety of M series fasteners.

### POLE TOOL



**Part Nos. EPOL6 and EPOL8**

### MOST COMMON FASTENERS

PIN #	DESCRIPTION
12HSMP034	1/2" One hole strap with 3/4" pin
M034	3/4" Plated pin with top hat
M100	1" Pin with gold domed washer
14THRHP034	1/4" Threaded rod hanger

# GYPFAST



**Fully Automatic Cordless Gas Fastening System for Attaching Exterior Sheathing to Light Gauge Steel Framing**

**Fuel cell**  
**Part No. TFUEL**



**Battery**  
**Part No. 405176**



## DESCRIPTION

- Part No.: GYPFAST
- Fully Automatic
- 2-1/2" Pin Capacity
- Length: 16"
- Height: 13"
- Weight: 8.9 lbs. (9.7 with nails)
- Lengths: 1", 1-1/2", 2" and 2-1/2"
- Diameter: .140" Nominal
- Head Style: 5/16" dia. bugle head
- Finish: Climacoat Long Life Polymer

## APPLICATIONS

- Exterior Gypsum sheathing to steel framing
- Plywood and OSB sheathing/flooring
- Fiber cement panel attachment
- Blocking
- Exterior walls
- Windows/door bucks
- Specialty exterior sheathing attachment
- Woven wire mesh or expanded metal lath to steel framing

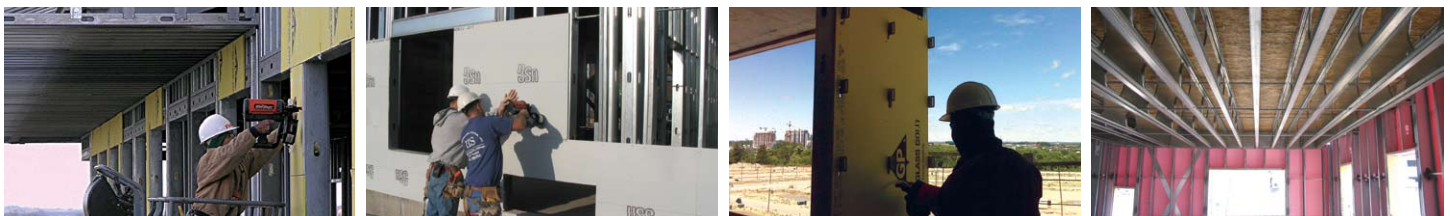
## FEATURES

- Fully automatic system with 150 nail capacity is 3-5 times faster than screwing.
- Fast set-up and tear down – insert battery, fuel cell and nail coil – eliminates need for extension cord, hoses and compressors.
- Aggressive, patented nail shank design provides high pullout performance.
- Contoured bugle head style provides high pullover (wind) resistance.
- Long life Climacoat™ finish is 10 times more corrosion resistant than electro-zinc plating.
- Woven wire mesh or expanded metal lath to steel framing
- 2 year warranty

## MOST COMMON FASTENERS

PIN #	.140" DIA. KNURLED SHANK 5/16" DIA. BUGLE HEAD		MASTER CARTON	APPLICATION
	IN.	(MM)		
GF100	1	25.4	4,800 nails/ctn (48 - 100 ct. coils) 5 fuel cells	Metal to Metal Attachment
GF112	1-1/2	38.1	6,000 nails/ctn (40- 150 ct. coils) 6 fuel cells	Single Layer of Exterior Sheathing, Wood Furring and Blocking
GF200	2	50.8	4,800 nails/ctn (32 - 150 ct. coils) 5 fuel cells	Double Layer of Exterior Gypsum Sheathing, Wood Furring and Blocking
GF212	2-1/2	63.5	2,700 nails/ctn (18 - 150 ct. coils) 3 fuel cells	Multi-Layers of Sheathing, Wood Blocking, and Dimensional Lumber

## APPLICATIONS



Exterior Gypsum sheathing to steel framing, Plywood and OSB sheathing/flooring, Fiber cement panel attachment, Blocking Exterior walls, Windows/door bucks, Specialty exterior sheathing attachment, Woven wire mesh or expanded metal lath to steel framing.

OSB and plywood to iSPAN joists